



**ADVANTAGEOUS
LOCATION**

CENTER OF THE EUROPEAN PART OF RUSSIA

- CONIFEROUS-DECIDUOUS AND FOREST-STEPPE NATURAL AREAS
- **≈ 40** % OF TERRITORY ARE DECIDUOUS AND CONIFEROUS FORESTS
- THE CLIMATE IS MODERATELY CONTINENTAL, THE SUMMER IS WARM AND THE WINTER IS MODERATELY COLD
- THE ANNUAL PRECIPITATION IS **450-540** MM.
- SOILS ARE DIVERSE - FROM GRAY FOREST AND PODZOLIC IN THE NORTH AND WEST TO VARIOUS TYPES OF BLACK SOIL IN THE SOUTH





WATER RESOURCES

THE EXTENSIVE RIVER NETWORK OF THE VOLGA-KAMA BASIN

TOTAL LENGTH OF ALL RIVERS IS **≈ 20** THOUSAND KM
QUANTITY **> 4** THOUSAND
THE LARGEST RIVERS ARE VOLGA, KAMA, BELAYA, VYATKA, IK

> 11 THOUSAND LAKES
> 7 THOUSAND SWAMPS



THE TOTAL WATER SURFACE AREA IS 4,4 THOUSAND KM² WHICH IS 6.4% OF THE ENTIRE TERRITORY OF THE REPUBLIC

GROUNDWATER ABUNDANCE

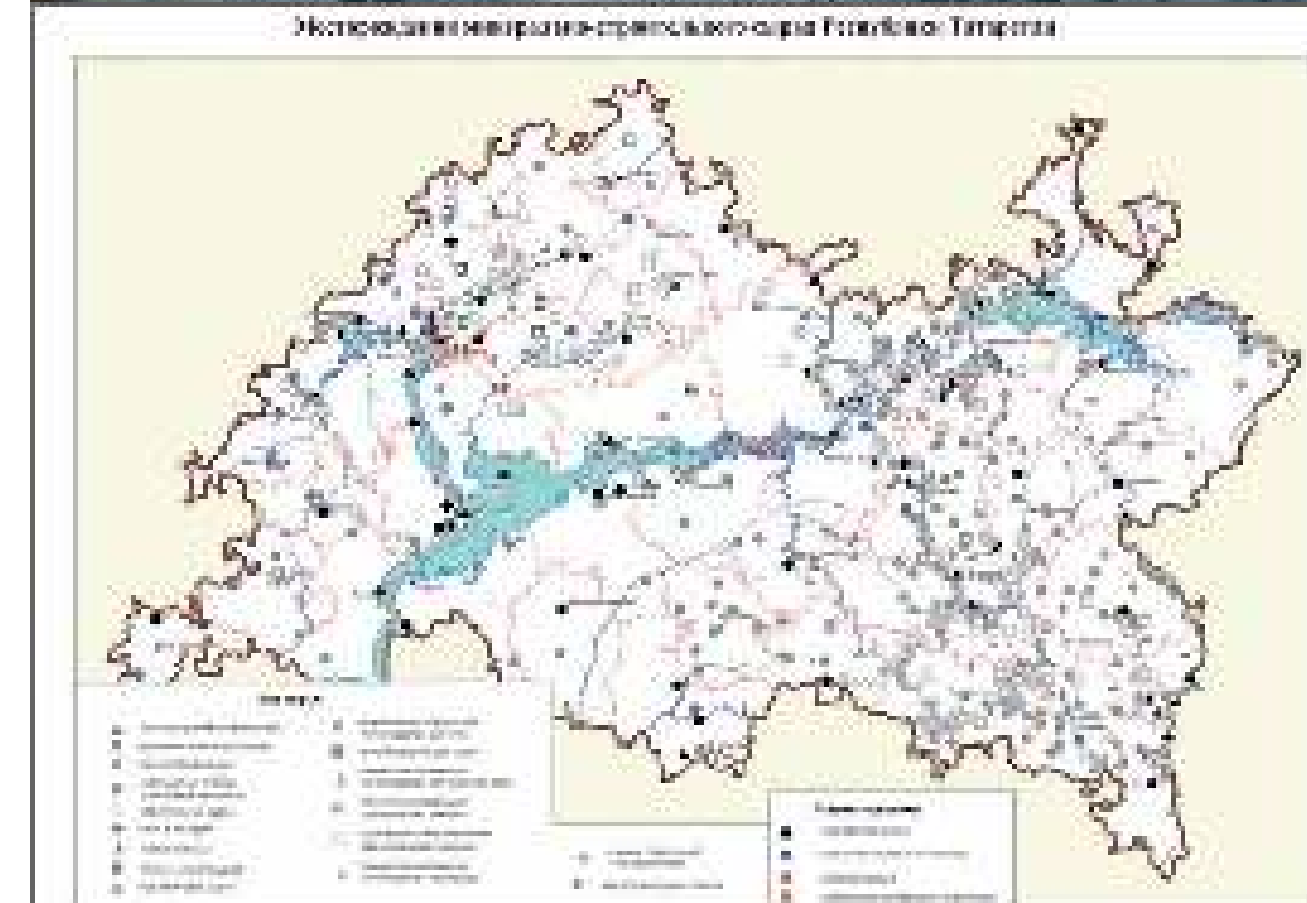
THE MAGNITUDE OF THE PREDICTED GROUNDWATER RESOURCES PER PERSON IS **1,45** M³ / DAY
PROVISION OF PROVEN OPERATIONAL RESERVES OF GROUNDWATER FOR 1 PERSON IS **0.60** M³ / DAY
(WITH A STANDARD - **0.25** M³ / DAY)
TOTAL GROUNDWATER RESERVES ARE **2,8** THOUSAND M³ / DAY





SOLID MINERALS

- ZEOLITE-CONTAINING MARL - 88,336 MILLION TONS
- BUILDING STONE - 64,812 MILLION M³
- SAWBLADE - 2,596 MILLION M³
- CARBONATE ROCKS FOR CHEMICAL RECLAMATION OF ACID SOILS – 89,162 MILLION TONS
- SAND-GRAVEL MATERIALS - 342,738 MILLION M³
- GENERAL CONSTRUCTION SANDS - 95,312 MILLION M³
- SANDS FOR CONCRETE AND SILICATE PRODUCTS - 73,299 MILLION M³
- BRICK AND TILE RAW MATERIALS - 158,26 MILLION M³
- EXPANDED CLAY RAW MATERIALS - 21,45 MILLION M³



- PEAT - 26,531 MILLION TONS
- SAPROPEL - 3,156 MILLION TONS
- GYPSUM AND ANHYDRITE - 71,08 MILLION TONS
- BENTONITE CLAY - 46,24 MILLION TONS
- MARBLE ONYX - 823,5 TONS
- THERAPEUTIC MUD - 27,08 THOUSAND M³
- MINERAL PAINTS - 2,62 MILLION TONS
- GLASS SANDS - 11,9 MILLION TONS
- FORMING SANDS - 46,32 MILLION TONS
- PHOSPHORITIC ORES - 225 THOUSAND TONS



OIL RESOURCES

208

OIL FIELDS

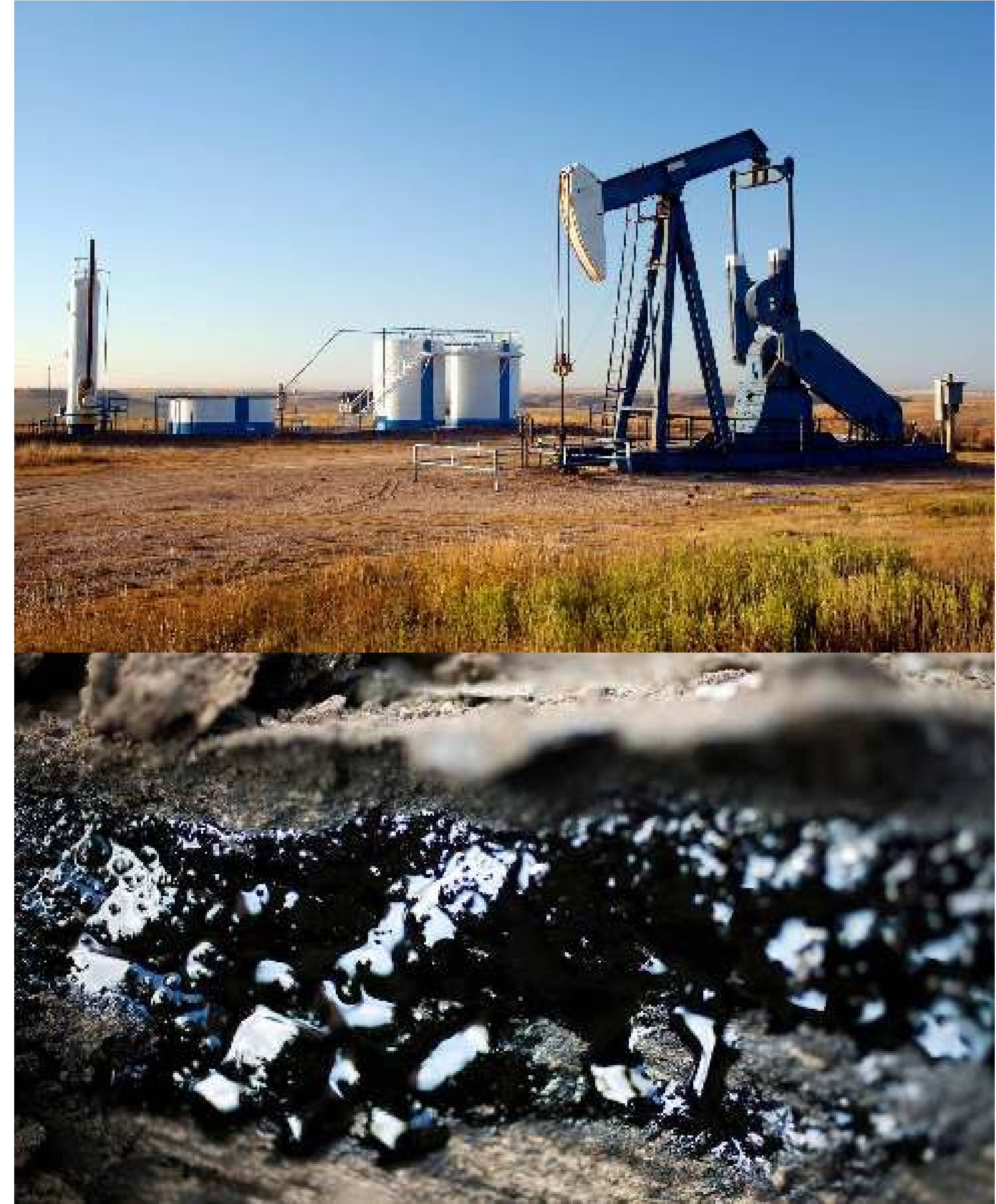
FROM 4,14 TO 16,1 BILLION TONS
OF SHALE HYDROCARBON RESOURCES

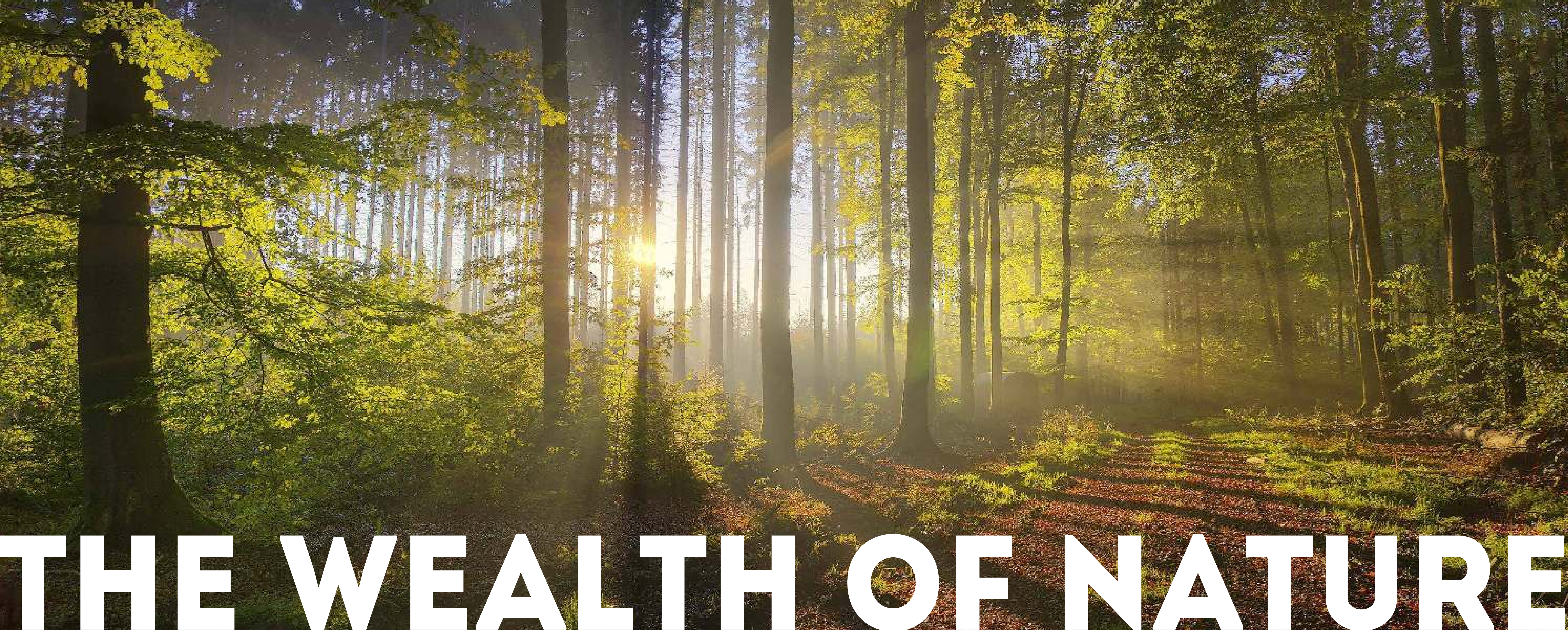
ABOUT 1 BILLION TONS
OF PROVEN OIL RESERVES

14,6 BILLION M3
RESERVES OF GAS DISSOLVED IN OIL

OVER 1,4 MILLION TONS
OF BITUMEN RESOURCES

ROMASHKINSKOYE FIELD IS THE SECOND LARGEST FIELD IN RUSSIA





THE WEALTH OF NATURE

VARIETY OF FLORA AND FAUNA

> **1600** SPECIES OF VASCULAR PLANTS

> **50** SPECIES OF MAMMALS

> **280** SPECIES OF BIRDS

8 KINDS OF REPTILES

10 SPECIES OF AMPHIBIANS

54 TYPES OF FISH

> **5 000** SPECIES OF INVERTEBRATES

SPECIALLY PROTECTED NATURAL AREAS

VOLGA-KAMA STATE NATURAL BIOSPHERE RESERVE

FOUNDED IN 1960 | AREA IS 11 377 HECTARES

NATIONAL PARK "LOWER KAMA"

FOUNDED IN 1991 | AREA IS 26 455 HECTARES

27 STATE NATURAL RESERVES OF REGIONAL SIGNIFICANCE OF AN INTEGRATED PROFILE

143 NATURAL MONUMENTS OF REGIONAL SIGNIFICANCE

6 STATE NATURAL GAME RESERVES

3 PAS OF LOCAL IMPORTANCE





**LOVE NATURE AS WE DO!
INVEST IN TATARSTAN!**



**2017
YEAR OF ECOLOGY
IN RUSSIA**