



# **TRANSPORT INFRASTRUCTURE OF THE REPUBLIC OF TATARSTAN**





## INTERNATIONAL AIRPORT "BEGISHEVO"

LOCATED 21 KM FROM THE CITY OF NIZHNEKAMSK AND  
24 KM FROM THE CITY OF NABEREZHNYE CHELNY

INCLUDES:  
ARTIFICIAL RUNWAY SIZE 2506x42 METERS AND AIR  
TERMINAL

REGULAR AND CHARTER FLIGHTS ARE CARRIED OUT FROM  
THE AIRPORT TO THE CITIES OF RUSSIA, TO THE NEAR AND  
FAR ABROAD



## KAZAN RIVER PORT

THE RIVER PORT ON THE 1310 KM OF THE VOLGA  
RIVER, LOCATED ON ITS LEFT BANK IN THE CITY OF  
KAZAN, IS ONE OF THE KEY TRANSPORTATION  
CENTERS AND THE LARGEST PORT OF TATARSTAN,  
WHICH IS CONNECTED TO THE BALTIC, WHITE,  
CASPIAN, AZOV AND BLACK SEAS BY THE UNIFIED  
DEEP-WATER SYSTEM OF THE EUROPEAN PART OF  
RUSSIA



## INTERNATIONAL AIRPORT "KAZAN"

LOCATED 28 KM SOUTH-EAST OF KAZAN

INCLUDES: AN ARTIFICIAL RUNWAY MEASURING  
3750x45 METERS

THE AIRPORT COMPLEX, WHICH INCLUDES THREE TERMINALS  
(1, 1A AND 2).

REGULAR AND CHARTER FLIGHTS ARE CARRIED OUT FROM THE  
AIRPORT TO THE CITIES OF RUSSIA, TO THE NEAR AND FAR  
ABROAD



## AIRPORT BUGULMA "AIR GATE" OF THE OIL SOUTH-EAST OF TATARSTAN

LOCATED 7 KM FROM THE CITY OF BUGULMA

INCLUDES:  
ARTIFICIAL RUNWAY SIZE 2000x40 METERS AND AIR  
TERMINAL

THERE ARE REGULAR AND CHARTER FLIGHTS TO THE  
REGIONS OF RUSSIA FROM THE AIRPORT



AIR TRANSPORT





## "KAZAN"

PASSENGER TRAFFIC FOR 2017 - 2,623.43 THOUSAND PEOPLE  
CARGO TURNOVER IN 2017 - 2967.6 TONS



## "BEGISHEVO"

PASSENGER TRAFFIC IN 2017 - 587.77 THOUSAND PEOPLE  
FREIGHT TURNOVER FOR 2017 IS 652.43 TONS



## "BUGULMA"

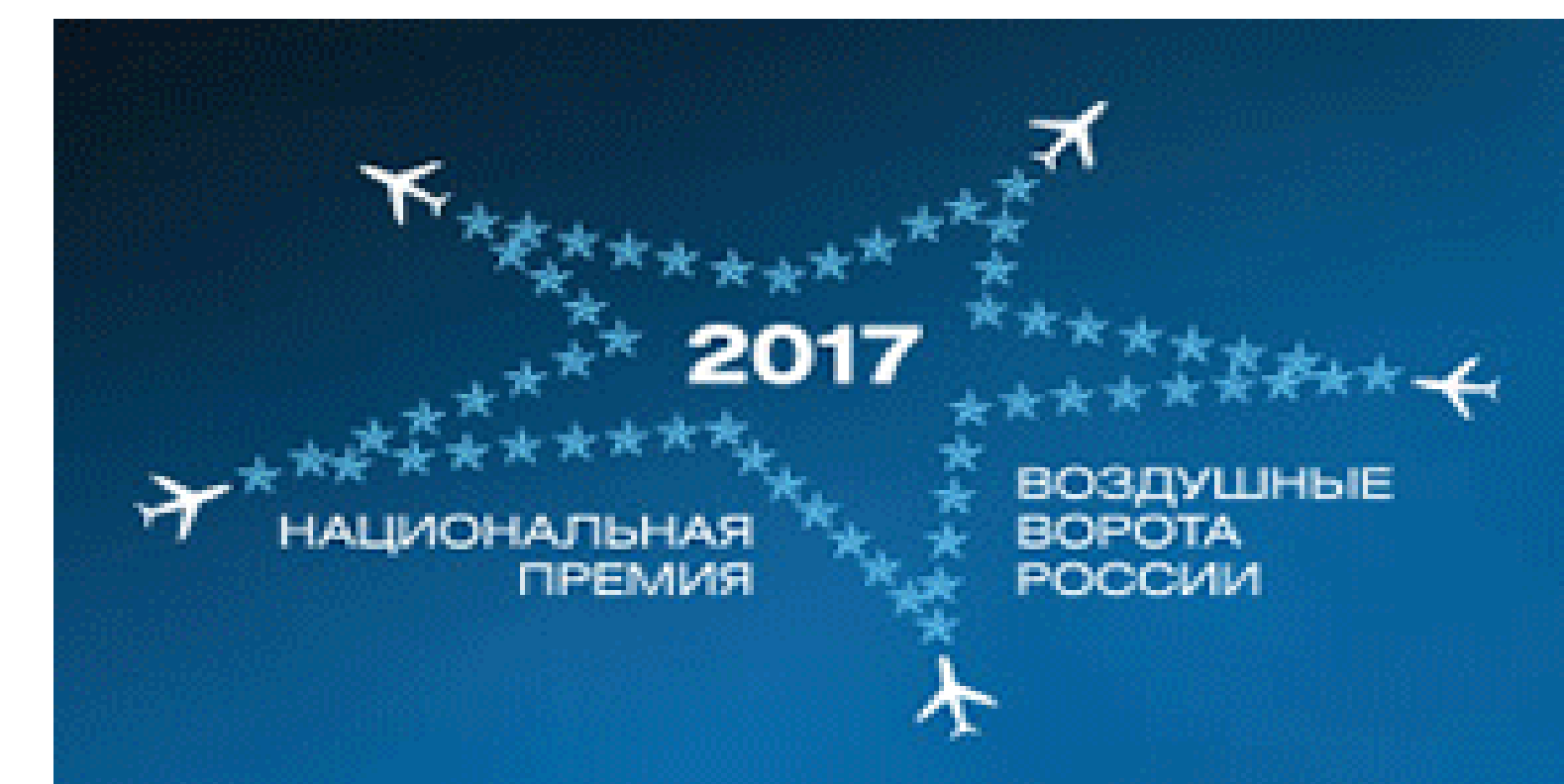
PASSENGER TRAFFIC IN 2017 - 54.01 THOUSAND PEOPLE  
CARGO TURNOVER IN 2017 - 23.16 TONS



INCLUDED IN THE TOP 100 BEST AIRPORTS IN THE WORLD

"THE BEST REGIONAL AIRPORT IN RUSSIA AND THE CIS"

AIR GATE OF RUSSIA







**RAILWAY TRANSPORT**

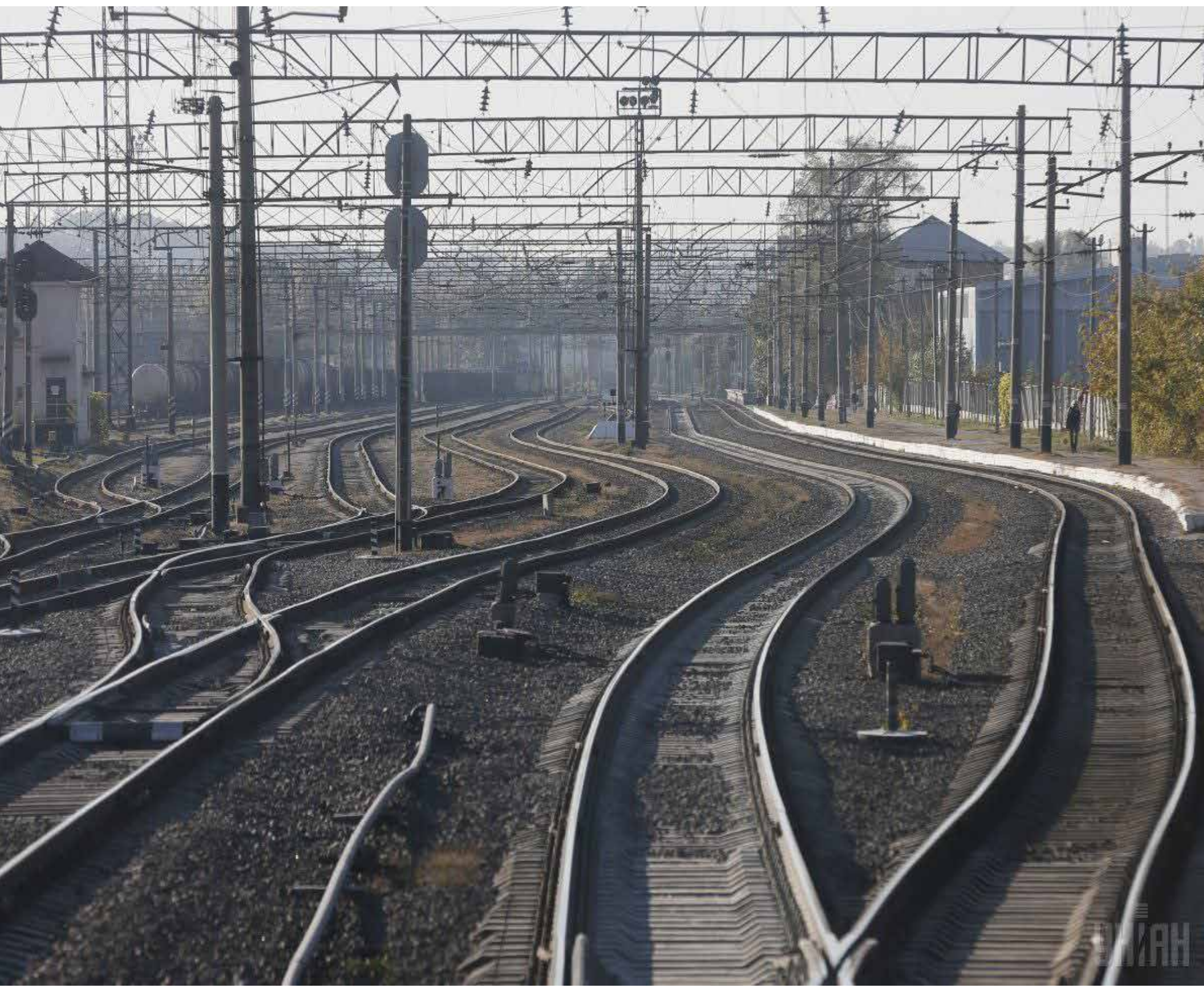


# GORKY RAILWAY

THE LENGTH OF RAILWAY TRACKS IS 1040 KM, INCL. 379.7 ELECTRIFIED LINES

10 RAILWAY STATIONS AND 145 PASSENGER LANDING PLATFORMS

4 STATIONS OF THE FEDERAL DIRECTORATE



## SUBURBAN TRAINS PASSENGER TRAFFIC FOR 2017 IS 1.7 MILLION PEOPLE



## CARGO TRANSPORTATION IN 2017 - 6.1 MILLION PEOPLE



# KUIBYSHEV RAILWAY

THE LENGTH OF RAILWAY TRACKS IS 849 KM, INCL. 379.7 ELECTRIFIED LINES

6 RAILWAY STATIONS AND 65 PASSENGER LANDING PLATFORMS

4 STATIONS OF THE FEDERAL DIRECTORATE





An aerial photograph taken from the deck of a large cruise ship, looking out over a vast blue ocean. The ship's deck is visible on the right side of the frame, featuring a curved promenade with several yellow umbrellas and lounge chairs. A small red and white pilot boat, with the word "PILOT" visible on its side, is moving through the water, leaving a white wake. The horizon is visible in the distance under a clear sky.

# WATER TRANSPORT





## KAZAN RIVER PORT

ONE OF THE KEY TRANSPORT CENTERS AND THE LARGEST PORT OF TATARSTAN

- PASSENGER TRAFFIC FOR 2017, **236,9** MILLION PEOPLE
- TRANSPORTED IN SUBURBAN TRAFFIC IN 2017 - **328,9** THOUSAND PASSENGERS
- CARGO TRANSPORTATION IN 2017 - **5,2** MILLION TONS



**ТАТФЛОТ**  
судоходная компания







# ROAD ECONOMY



# IN 2017

## THE MARKET OF PASSENGER TRANSPORTATION

**80** CARRIERS, INCL. **25** LARGE MOTOR  
TRANSPORT ENTERPRISES

IT SERVES **147** INTER-MUNICIPAL ROUTES

**579** BUSES INVOLVED



### REGULAR TRANSPORTATION BY ROAD

PASSENGER TRAFFIC **216,3** MILLION  
PEOPLE

PASSENGER TRAFFIC **1379,2** MILLION  
PASSENGERS



### TRUCKING

CARGO VOLUME **53,5** MILLION TONS

CARGO TURNOVER AMOUNTED TO **3501,9**  
MILLION TON-KILOMETERS





number of stations

# ELECTRIC TRANSPORT



THE VOLUME OF TRANSPORTED PASSENGERS BY URBAN ELECTRIC TRANSPORT IN 2017 AMOUNTED TO **98,7** MILLION PASSENGERS.

PASSENGER TRAFFIC AT THE ENTERPRISES OF URBAN ELECTRIC TRANSPORT IN 2017 AMOUNTED TO **462,5** MILLION PASSENGERS.



THE TOTAL LENGTH OF THE EXISTING KAZAN SUBWAY IS **17,3** KM

NUMBER OF STATIONS - **10**

ROLLING STOCK CONSISTS OF **14** TRAINS (47 CARS)







# LOGISTICS COMPLEXES





СВЯЗЖСКИЙ МЕЖРЕГИОНАЛЬНЫЙ  
МУЛЬТИМОДАЛЬНЫЙ  
ЛОГИСТИЧЕСКИЙ ЦЕНТР



**THE PURPOSE OF THE PROJECT:** THE CREATION OF AN INTERNATIONAL TRANSPORT CORRIDOR "EUROPE - WESTERN CHINA"

**PROJECT OBJECTIVE:** TO REALIZE THE POTENTIAL OF ALL REGIONS OF THE VOLGA FEDERAL DISTRICT AND RUSSIA AS A WHOLE

**THE SMMLT** WILL CARRY OUT INTEGRATED CARGO HANDLING,  
BY **2020**, THE EXPECTED TURNOVER OF UP TO **12 MILLION TONS**

THE TOTAL COST OF THE PROJECT IS MORE THAN **20 BILLION RUBLES**, INCLUDING: THE BUDGET OF THE RUSSIAN FEDERATION - **6,7 BILLION RUBLES**, THE BUDGET OF THE REPUBLIC OF TATARSTAN – **1,4 BILLION RUBLES**, FUNDS FROM PRIVATE INVESTORS MORE THAN **12 BILLION RUBLES**







HUMAN RESOURCES



SCHOOL AND PRESCHOOL EDUCATION

 INTERNATIONAL  
SCHOOLS

 SECONDARY SCHOOLS,  
**380000** STUDENTS  
STUDY

 PRESCHOOL  
EDUCATIONAL  
ORGANIZATIONS

PROFESSIONAL EDUCATION

**KAZAN (VOLGA REGION)  
FEDERAL UNIVERSITY**

«5TH PLACE AMONG RUSSIAN  
UNIVERSITIES IN THE RATING  
TIME HIGHER EDUCATION»

 ORGANIZATIONS OF  
HIGHER EDUCATION,  
**150 THOUSAND**  
STUDENTS STUDY

**INNOPOLIS IS AN INNOVATIVE  
UNIVERSITY OF INFORMATION  
TECHNOLOGY. 571 STUDENTS**

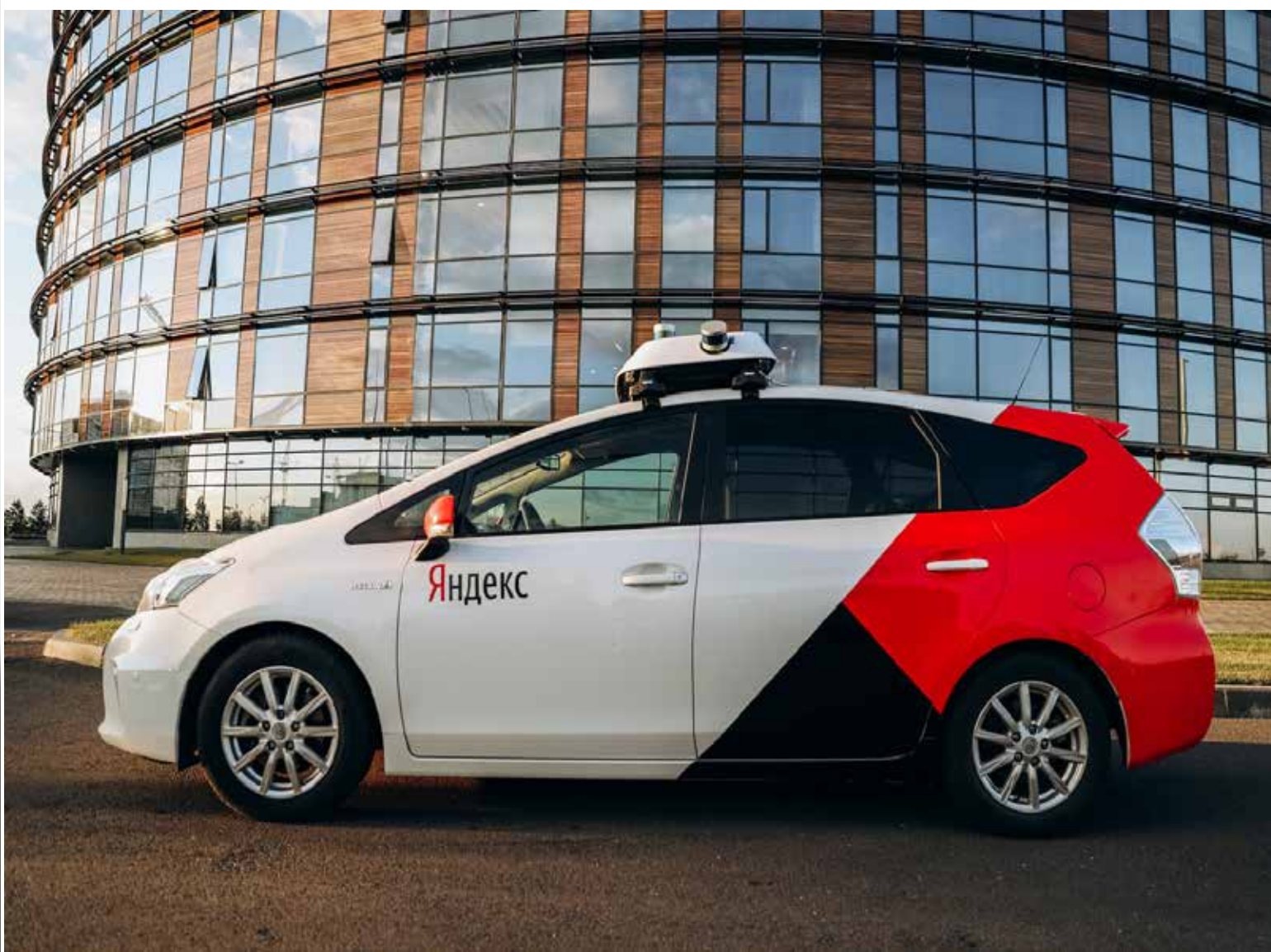
 PROFESSIONAL  
EDUCATIONAL  
ORGANIZATION





**INNOVATION AND INVESTMENT**





### UNMANNED BUSES

MINIBUS LENGTH - 4.6 METERS  
CAPACITY - FROM 8 TO 12 PEOPLE.  
ELECTRIC MOTOR POWER -  
96 KW (130 HORSEPOWER)  
THE MAXIMUM SPEED OF THE DRONE IS  
110 KM / H



### HIGH-SPEED HIGHWAY MOSCOW-KAZAN

THE LENGTH OF THE SECTION  
MOSCOW - NIZHNY NOVGOROD - KAZAN - 770KM  
MAXIMUM SPEED - UP TO 400KM / H  
TRAVEL TIME FROM KAZAN TO MOSCOW -  
3.5 HOURS



### FIRST IN RUSSIA UNMANNED TAXI

THE UNMANNED VEHICLE STRICTLY  
OBSERVES ALL THE RULES OF THE ROAD.  
THE CABIN CAN ACCOMMODATE UP TO 3  
PASSENGERS



### INFRASTRUCTURE FOR ELECTRIC CARS


4 CHARGING STATIONS, 2 OF WHICH ARE  
FREE



### CONSTRUCTION OF THE PAYED AUTOMOBILE SHAWL (M7) - BALA (M5)

LENGTH - 299 KM  
4 LANES WITH A DIVIDING STRIP  
MAXIMUM SPEED - 150 KM / H  
LACK OF INTERSECTIONS IN ONE LEVEL





# INVEST IN TATARSTAN



