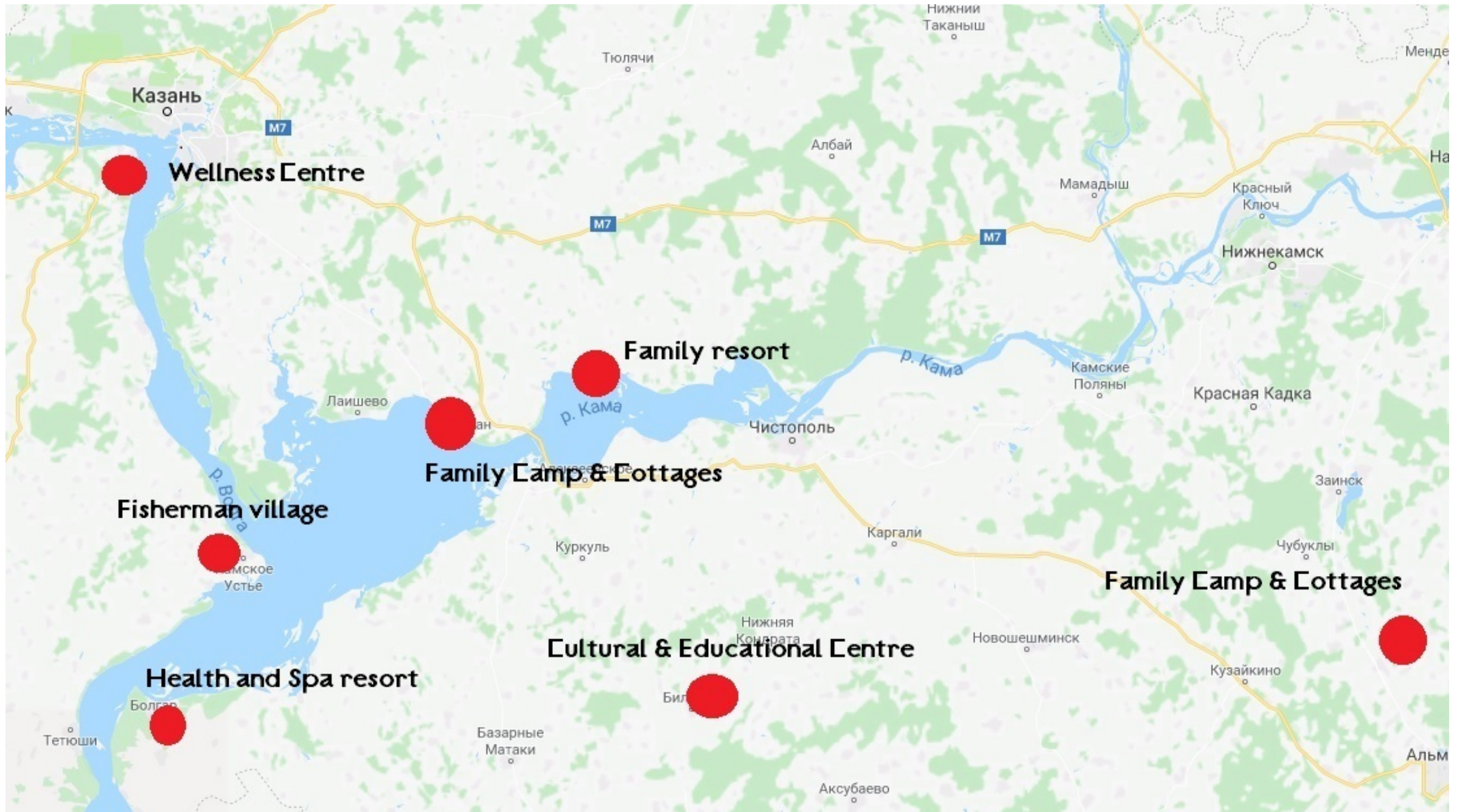
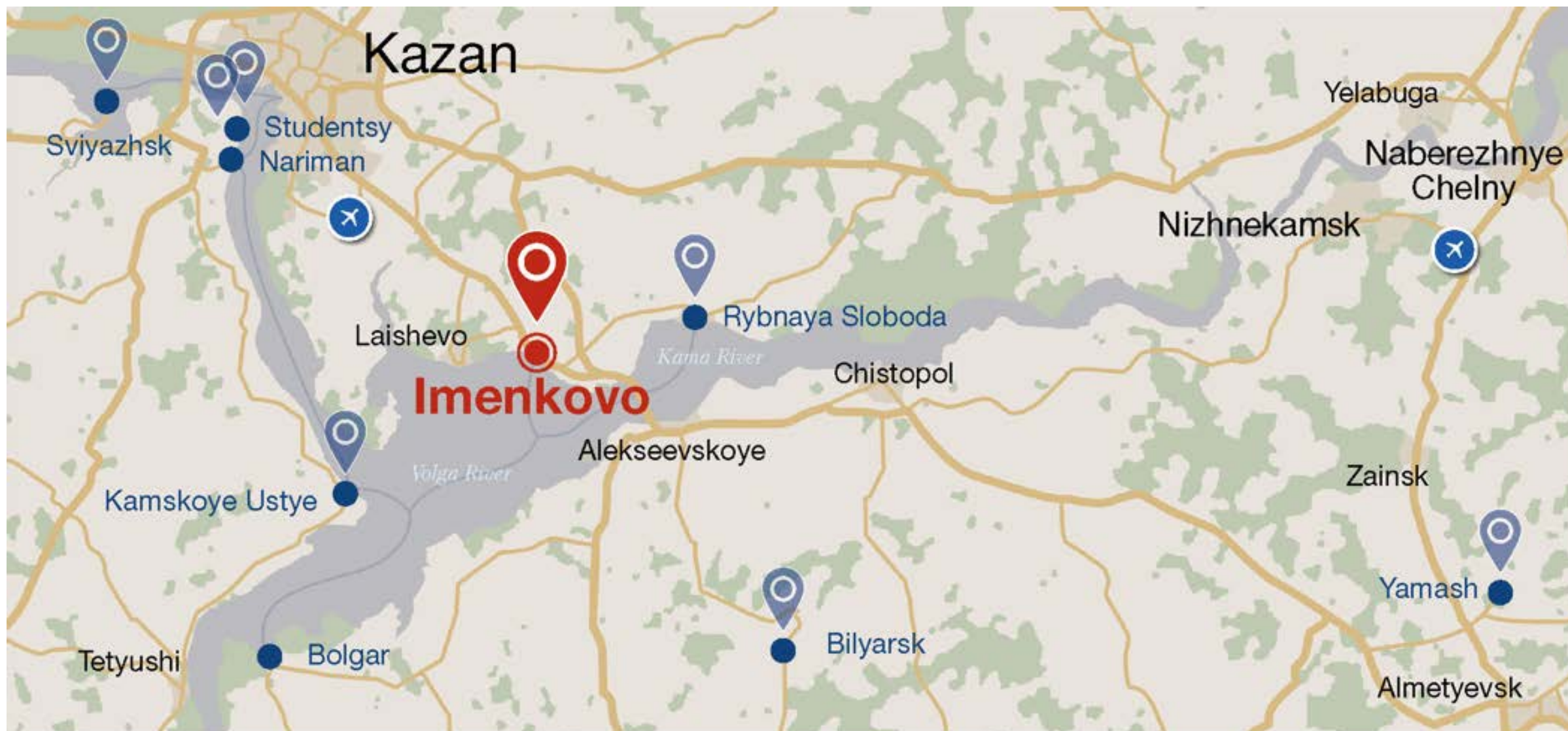


## BASE PACKAGE OF INVESTMENT OFFERS







## «IMENKOVO» CLUSTER



# FINANCIAL FEASIBILITY STUDY OF IMENKOVO CAR TOURISM CLUSTER PROJECT.

Land plot area: 24.4 ha

Main business types:

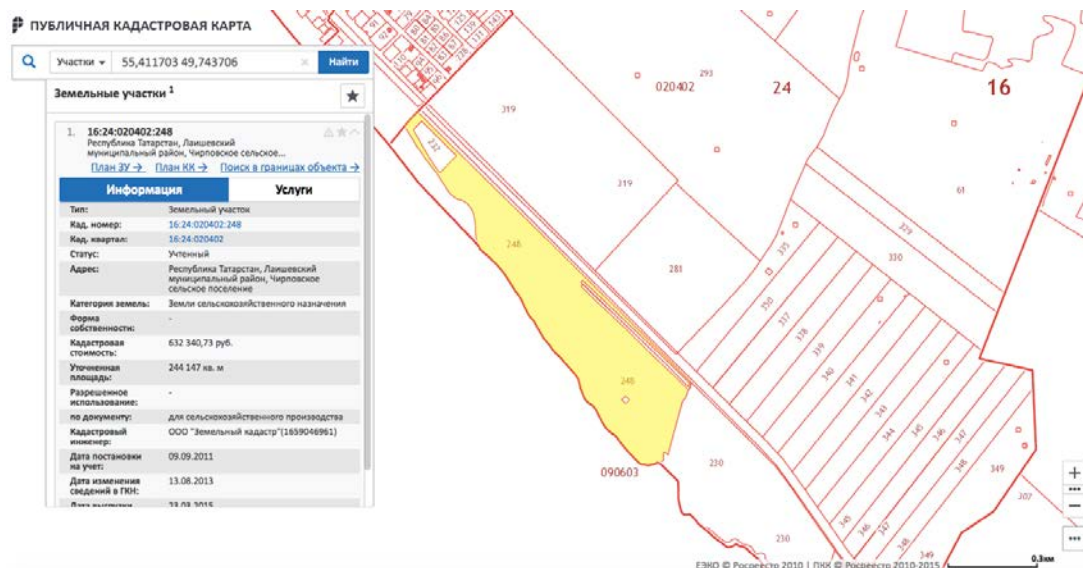
- Tourist base
- Camping
- Bathhouse complex
- Café restaurant with multi-purpose hall
- Sports and technical center
- Farmers market

Investment size: 296.8 million RUB

Payback period: 6.5 years

Number of workplaces: 96

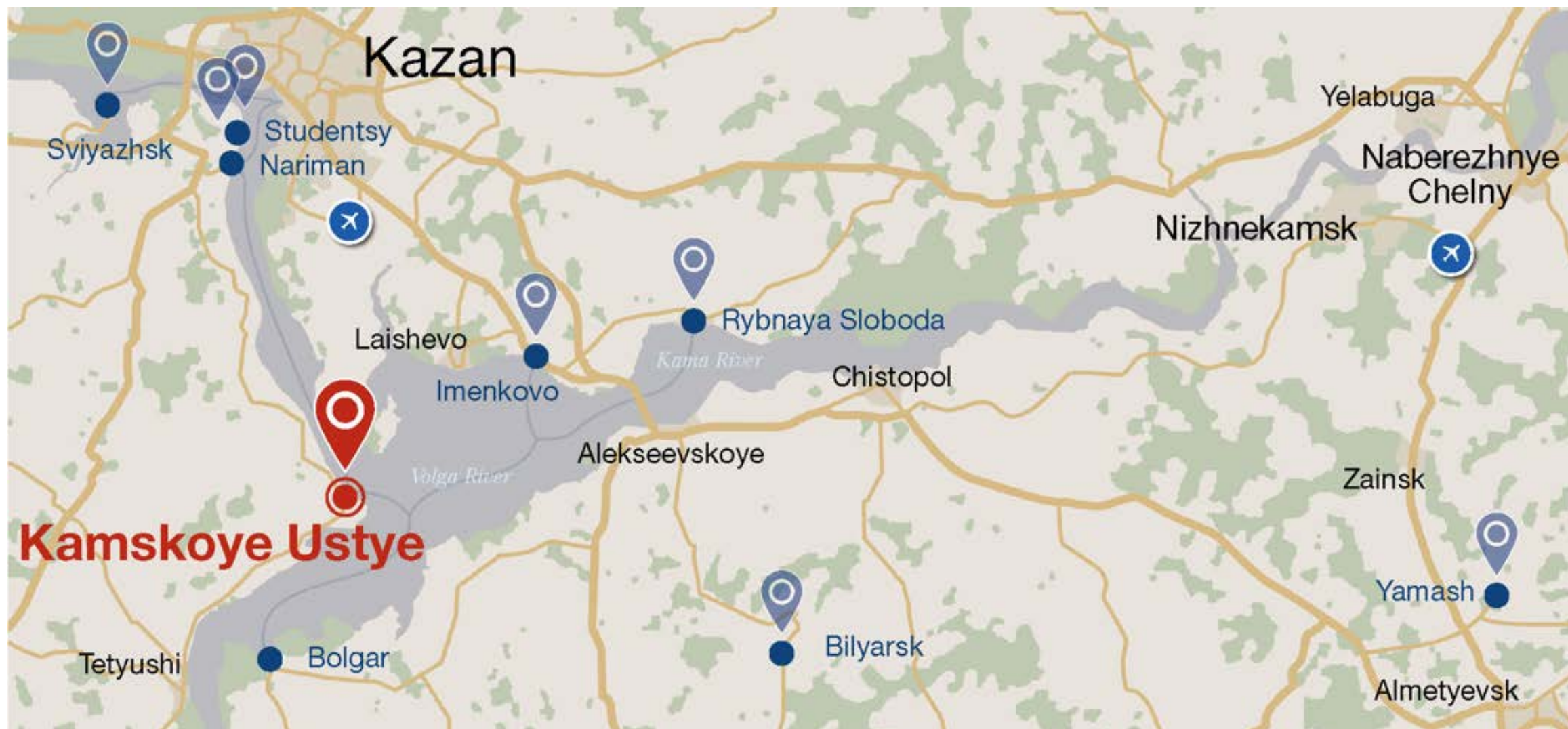
Growth of tourist flow: +30,480 persons every year



Large flow of potential customers near the cluster and the growing demand for points of product sale on the part of farmers and agricultural enterprises have identified one of the cluster's main facilities – a farmer's market.

The comfortable riverside and a popular spot for fishing also allows to confidently predict a constant demand for tourism services, to meet which it is envisioned to build a camping with 53 lots, a tourist base with 30 cabins and capacity of up to 140 people, bathhouse complex, children's park, and sports and technical center.

The cluster's core is a club house, in which, apart from a café with a terrace on the Volga, there is a multi-purpose hall that allows to hold public events all year round – from sporting events to corporate trainings.



## «KAMSKOYE USTYE» CLUSTER



# FINANCIAL FEASIBILITY STUDY OF KAMSKOYE USTYE TOURISM CLUSTER PROJECT.

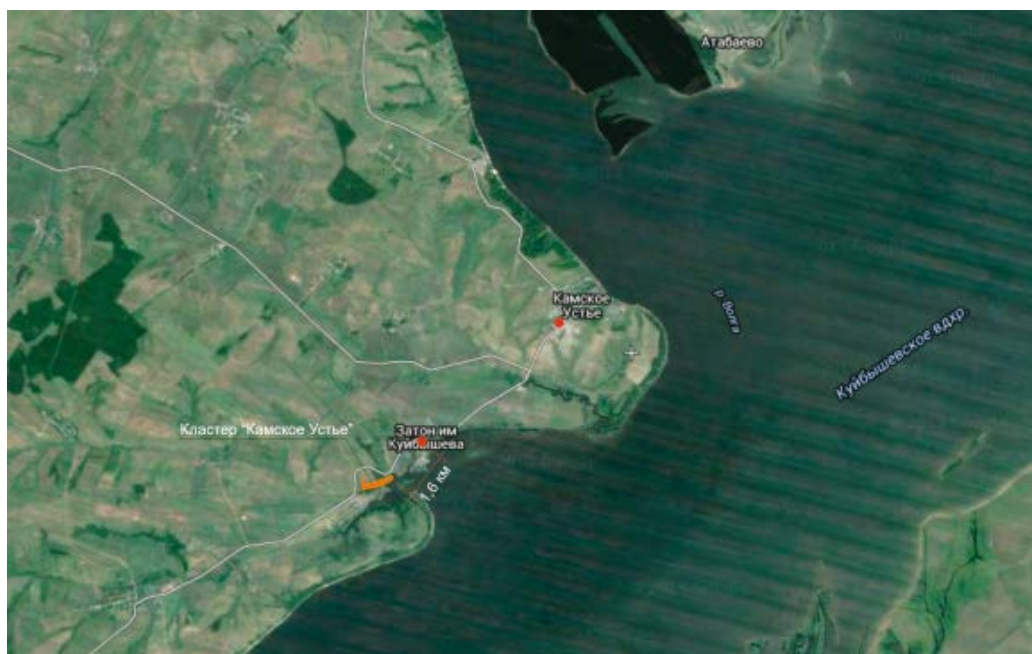
Land plot area: 32 ha

Main business types:

- Sauna complex
- Sport and technical center

Investment size: 417,7 million RUB

Payback period: 7,3 years



Defined at the disposal of the cluster is a fishing and family vacation land parcel situated near the village of Kamskoye Ustye next to the Kirelsky Riverboat yard, one of the popular locations for fishing, conveniently located on the wide, low-sloped shore of the Kuybyshevsky water reservoir with natural bays.





## «RYBNAYA SLOBODA» CLUSTER



# FINANCIAL FEASIBILITY STUDY OF RYBNAYA SLOBODA TOURISM CLUSTER PROJECT.

Land plot area: 40 ha

Main business types:

- Children's yacht school
- Children's sport camp
- Active Family Recreation Park

Investment size 667,7 million RUB

Payback period: 7,3 years

The kids and family cluster is presumed to be located on a land parcel located in a recreation zone inside the village Rybnaya Sloboda, which significantly reduces the investor's expenses for roads and engineering networks and also provides the availability of a work force and the social infrastructure of the village.

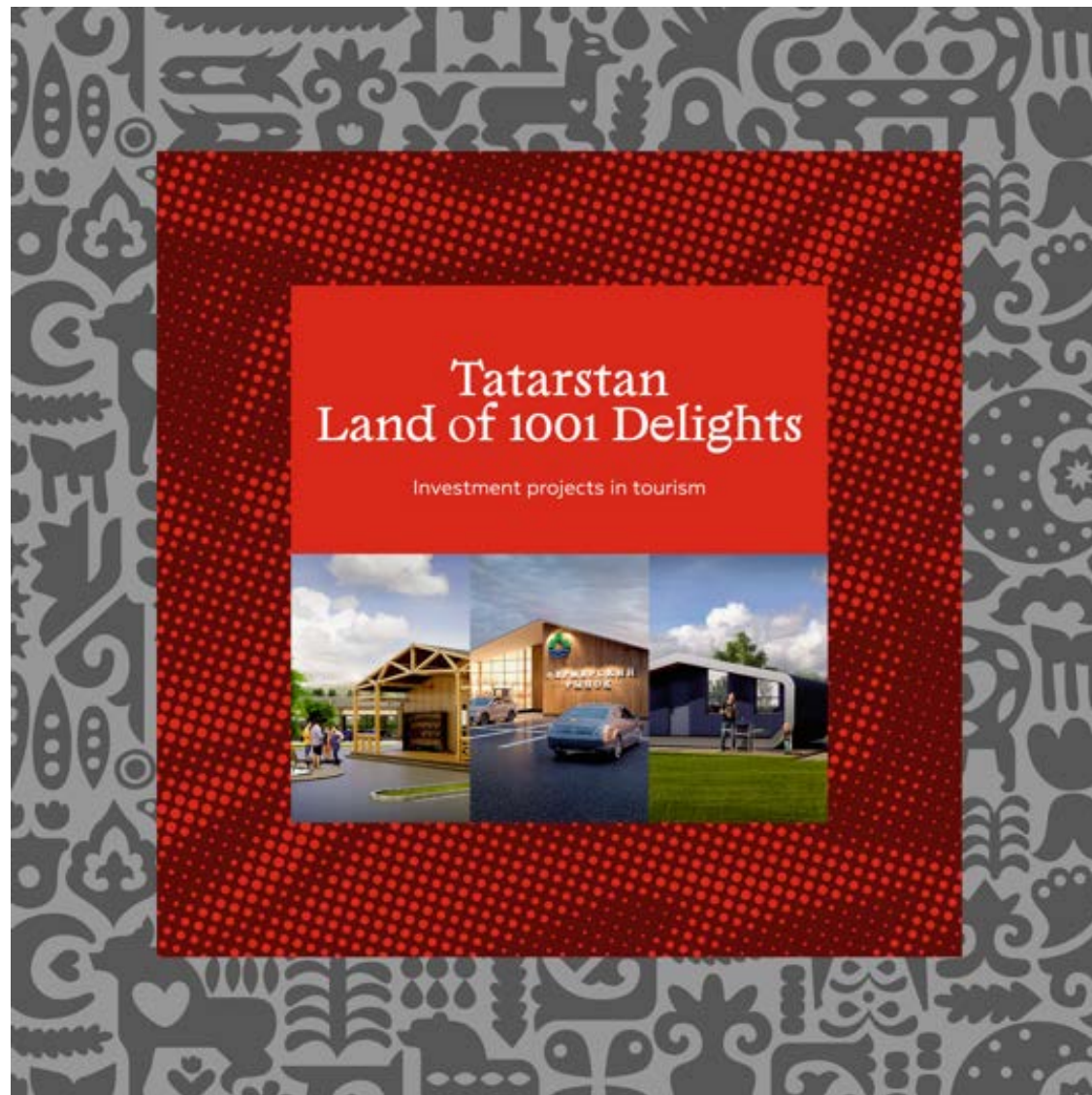
The variety of types of summer and winter vacation will provide a constant load and high profitability of the activities of the tourist facility.





# GOVERNMENT SUPPORT

- reduced tax for land for 7-10 years;
- Beneficial rates for the rent of the land;
- development of the supporting infrastructure (building new roads, supply with electricity, gas, water, etc.) for governmental funds up to the 30% of the project cost.



**THANK YOU FOR YOUR ATTENTION!**

**State Committee on Tourism  
of the Republic of Tatarstan**

**19, Gorky str. Kazan, Russia  
Tel. +7 (843) 222-90-20**

**email: [tat.tourism@tatar.ru](mailto:tat.tourism@tatar.ru)  
[www.Tourism.Tatarstan.ru](http://www.Tourism.Tatarstan.ru)**



**Visit  
Tatarstan**